



Web: www.anbobio.com
www.dijibio.com
Order: order@dijibio.com
Tel: (86) 519 8805 0026

ARFIP1 Antibody [#C14558]

Catalog Number: C14558

Concentration: 1mg/ml

Swiss-Prot No.: P53367

Other Names: ADP-ribosylation factor interacting 1;
arfaptin-1; ARFP1

Storage/Stability: Store at -20°C/1 year

Form of Antibody: Rabbit IgG in phosphate buffered saline (without Mg²⁺ and Ca²⁺), pH 7.4, 150mM NaCl, 0.02% sodium azide and 50% glycerol.

Immunogen: The antiserum was produced against synthesized peptide derived from internal of human ARFIP1.

Purification: The antibody was affinity-purified from

rabbit antiserum by affinity-chromatography using epitope-specific immunogen.

Specificity: ARFIP1 antibody detects endogenous levels of total ARFIP1 protein.

Reactivity: Human, Mouse, Rat

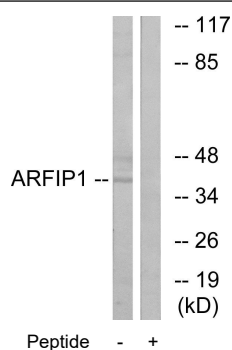
Applications: WB: 1:500~1:3000 IF: 1:100~1:500
ELISA: 1:40000

References:

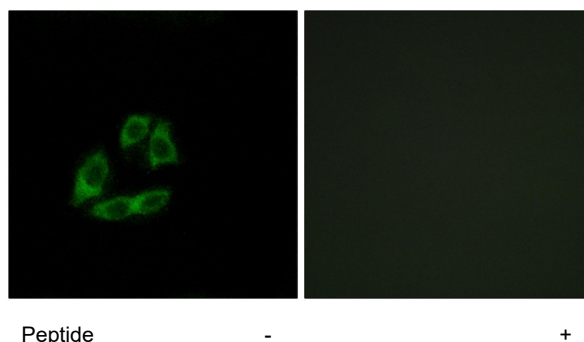
Kanoh H., J. Biol. Chem. 272:5421-5429(1997).

Premont R.T., Submitted (JAN-1999) to the EMBL/GenBank/DDBJ databases.

The MGC Project Team; Genome Res. 14:2121-2127(2004).



Western blot analysis of extracts from Jurkat cells, using ARFIP1 antibody.



Immunofluorescence analysis of A549 cells, using ARFIP1 antibody.