



Web: www.anbobio.com
www.dijibio.com
Order: order@dijibio.com
Tel: (86) 519 8805 0026

ARSA Antibody [#C14564]

Catalog Number: C14564

Concentration: 1mg/ml

Swiss-Prot No.: P15289

Other Names: arylsulfatase A; ASA;
cerebroside-sulfatase; EC 3.1.6.8; MLD

Storage/Stability: Store at -20°C/1 year

Form of Antibody: Rabbit IgG in phosphate buffered saline (without Mg²⁺ and Ca²⁺), pH 7.4, 150mM NaCl, 0.02% sodium azide and 50% glycerol.

Immunogen: The antiserum was produced against synthesized peptide derived from internal of human ARSA.

Purification: The antibody was affinity-purified from

rabbit antiserum by affinity-chromatography using epitope-specific immunogen.

Specificity: ARSA antibody detects endogenous levels of total ARSA protein.

Reactivity: Human, Mouse, Rat

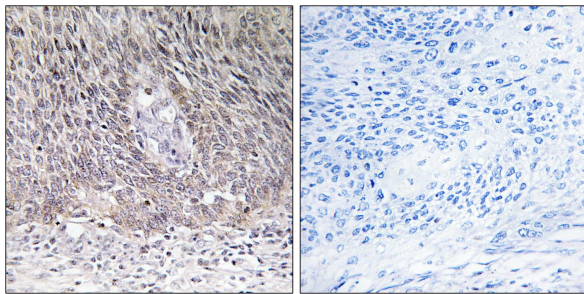
Applications: WB: 1:500~1:3000 IHC: 1:50~1:100
ELISA: 1:20000

References:

Stein C., J. Biol. Chem. 264:1252-1259(1989).

Kreysing J., Eur. J. Biochem. 191:627-631(1990).

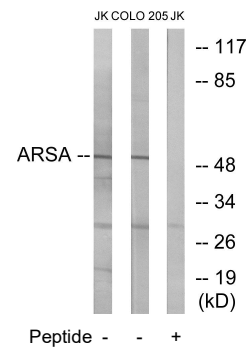
Collins J.E., Genome Biol. 5:RESEARCH84.1-RESEARCH84.11(2004).



Peptide -

+

Immunohistochemistry analysis of paraffin-embedded human cervix carcinoma tissue using ARSA antibody.



Western blot analysis of extracts from Jurkat cells and COLO cells, using ARSA antibody.