



Web: www.anbobio.com
www.dijibio.com
Order: order@dijibio.com
Tel: (86) 519 8805 0026

ARSE Antibody [#C14567]

Catalog Number: C14567

Concentration: 1mg/ml

Swiss-Prot No.: P51690

Other Names: ARSE; Arylsulfatase E; arylsulfatase E (chondrodysplasia punctata 1); ASE; CDPX; CDPX1; CDPXR; chondrodysplasia punctata 1; MGC163310

Storage/Stability: Store at -20°C/1 year

Form of Antibody: Rabbit IgG in phosphate buffered saline (without Mg²⁺ and Ca²⁺), pH 7.4, 150mM NaCl, 0.02% sodium azide and 50% glycerol.

Immunogen: The antiserum was produced against synthesized peptide derived from Internal of human ARSE.

Purification: The antibody was affinity-purified from

rabbit antiserum by affinity-chromatography using epitope-specific immunogen.

Specificity: ARSE antibody detects endogenous levels of total ARSE protein.

Reactivity: Human

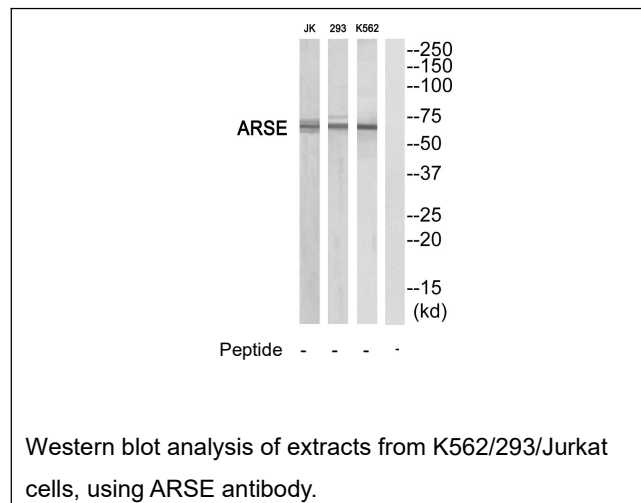
Applications: WB: 1:500~1:3000 ELISA: 1:10000

References:

Franco B., Cell 81:15-25(1995).

Suzuki Y., Submitted (APR-2005) to the EMBL/GenBank/DDBJ databases.

Daniele A., Am. J. Hum. Genet. 62:562-572(1998).



For Research Use Only