



**Web:** [www.anbobio.com](http://www.anbobio.com)  
[www.dijibio.com](http://www.dijibio.com)  
**Order:** [order@dijibio.com](mailto:order@dijibio.com)  
**Tel:** (86) 519 8805 0026

## ARSI Antibody [#C14571]

**Catalog Number:** C14571

**Concentration:** 1mg/ml

**Swiss-Prot No.:** Q5FYB1

**Other Names:** arylsulfatase I; ASI; EC 3.1.6.-

**Storage/Stability:** Store at -20°C/1 year

**Form of Antibody:** Rabbit IgG in phosphate buffered saline (without Mg<sup>2+</sup> and Ca<sup>2+</sup>), pH 7.4, 150mM NaCl, 0.02% sodium azide and 50% glycerol.

**Immunogen:** The antiserum was produced against synthesized peptide derived from internal of human ARSI.

**Purification:** The antibody was affinity-purified from rabbit antiserum by affinity-chromatography using epitope-specific immunogen.

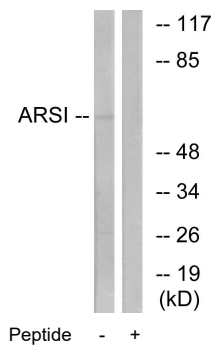
**Specificity:** ARSI antibody detects endogenous levels of total ARSI protein.

**Reactivity:** Human

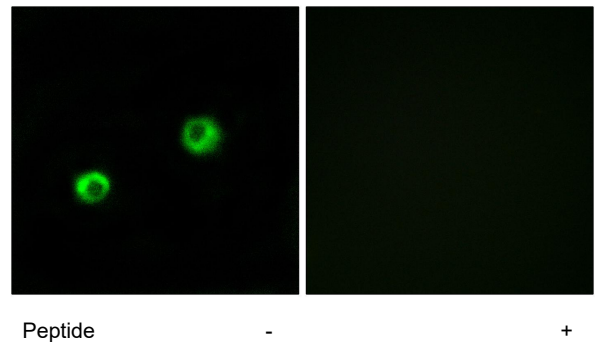
**Applications:** WB: 1:500~1:3000 IF: 1:100~1:500  
ELISA: 1:60000

**References:**

Sardiello M., Hum. Mol. Genet. 14:3203-3217(2005).



Western blot analysis of extracts from COS7 cells, using ARSI antibody.



Immunofluorescence analysis of MCF-7 cells, using ARSI antibody.