



**Web:** [www.anbobio.com](http://www.anbobio.com)  
[www.dijibio.com](http://www.dijibio.com)  
**Order:** [order@dijibio.com](mailto:order@dijibio.com)  
**Tel:** (86) 519 8805 0026

## IP6K2 Antibody [#C11845]

**Catalog Number:** C11845

**Concentration:** 1mg/ml

**Swiss-Prot No.:** Q9UHH9

**Other Names:** EC 2.7.4.21, IP6K2, Inositol hexakisphosphate kinase 2, InsP6 kinase 2, P(i)-uptake stimulator, PiUS

**Storage/Stability:** Store at -20°C/1 year

**Form of Antibody:** Rabbit IgG in phosphate buffered saline (without Mg<sup>2+</sup> and Ca<sup>2+</sup>), pH 7.4, 150mM NaCl, 0.02% sodium azide and 50% glycerol.

**Immunogen:** The antiserum was produced against synthesized peptide derived from internal of human IP6K2.

**Purification:** The antibody was affinity-purified from rabbit antiserum by affinity-chromatography using epitope-specific immunogen.

**Specificity:** IP6K2 antibody detects endogenous levels of total IP6K2 protein.

**Reactivity:** Human, Mouse, Rat

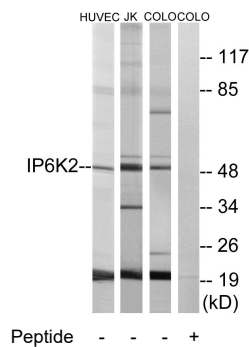
**Applications:** WB: 1:500~1:3000 IF: 1:100~1:500  
ELISA: 1:40000

**References:**

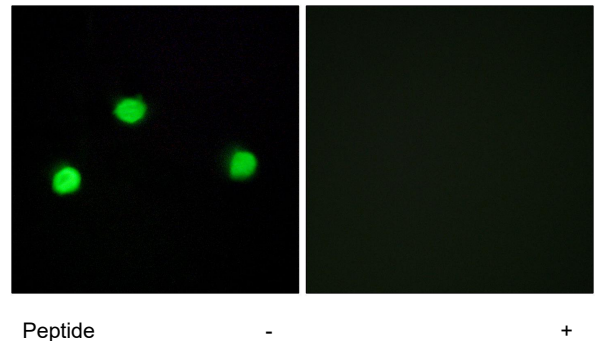
Saiardi A., J. Biol. Chem. 276:39179-39185(2001).

The MGC Project Team; Genome Res. 14:2121-2127(2004).

Saiardi A., Curr. Biol. 9:1323-1326(1999).



Western blot analysis of extracts from HUVEC cells, Jurkat cells and COLO cells, using IP6K2 antibody.



Immunofluorescence analysis of COS-7 cells, using IP6K2 antibody.