



Web: www.anbobio.com
www.dijibio.com
Order: order@dijibio.com
Tel: (86) 519 8805 0026

CARKL Antibody [#C11846]

Catalog Number: C11846

Concentration: 1mg/ml

Swiss-Prot No.: Q9UJH6

Other Names: Carbohydrate kinase-like protein, EC 2.7.1.-, CARKL

Storage/Stability: Store at -20°C/1 year

Form of Antibody: Rabbit IgG in phosphate buffered saline (without Mg²⁺ and Ca²⁺), pH 7.4, 150mM NaCl, 0.02% sodium azide and 50% glycerol.

Immunogen: The antiserum was produced against synthesized peptide derived from N-terminal of human

CARKL.

Purification: The antibody was affinity-purified from rabbit antiserum by affinity-chromatography using epitope-specific immunogen.

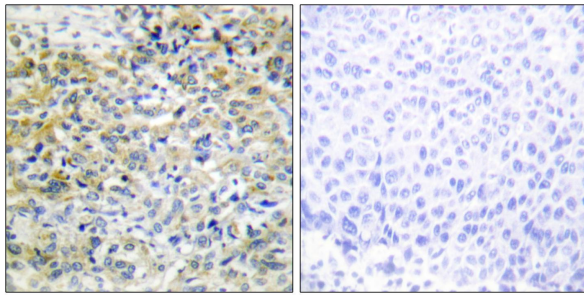
Specificity: CARKL antibody detects endogenous levels of total CARKL protein.

Reactivity: Human, Mouse, Rat

Applications: WB: 1:500~1:3000 IHC: 1:50~1:100
ELISA: 1:20000

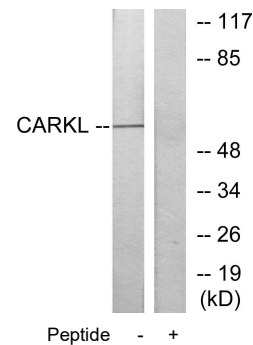
References:

Touchman J.W., Genome Res. 10:165-173(2000).



Peptide - +

Immunohistochemistry analysis of paraffin-embedded human liver carcinoma tissue using CARKL antibody.



Peptide - +

Western blot analysis of extracts from Jurkat cells, using CARKL antibody.