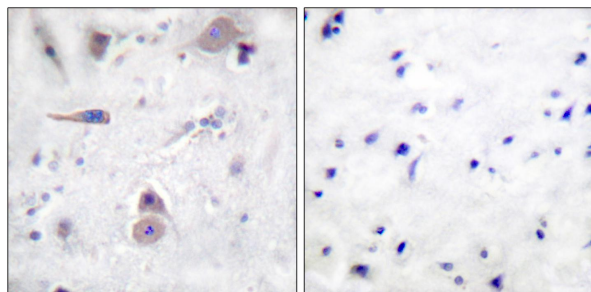




Web: [www.anbobio.com](http://www.anbobio.com)  
[www.dijibio.com](http://www.dijibio.com)  
Order: [order@dijibio.com](mailto:order@dijibio.com)  
Tel: (86) 519 8805 0026

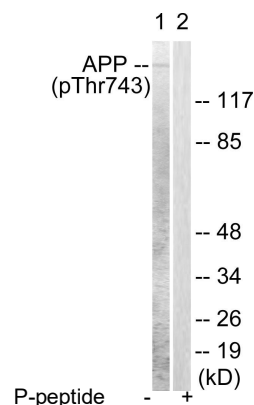
## Amyloid $\beta$ A4 (Phospho-Thr743/668) Antibody [#A0004]

- Catalog Number:** A0004  
**Amount:** 50 $\mu$ g/50 $\mu$ l, 100 $\mu$ g/100 $\mu$ l, 200 $\mu$ g/200 $\mu$ l  
**Swiss-Prot No. :** P05067  
**All Names:** A4, ABPP, AD1, APP, APPI, Alzheimer's disease amyloid protein, Amyloid beta A4 protein precursor, Beta-amyloid protein 40, Beta-amyloid protein 42, C31, C83, CVAP, Cerebral vascular amyloid peptide, Gamma-CTF(50), Gamma-CTF(57), Gamma-CTF(59), P3(40), P3(42), PN-II, PreA4, Protease nexin-II, Soluble APP-alpha (S-APP- alpha), Soluble APP-beta (S-APP-beta)  
**All Sites:** Human: Thr743; Mouse: Thr743; Rat: Thr743  
**Form of Antibody:** Rabbit IgG in phosphate buffered saline (without Mg<sup>2+</sup> and Ca<sup>2+</sup>), pH 7.4, 150mM NaCl, 0.02% sodium azide and 50% glycerol.  
**Storage/Stability:** Store at -20°C/1 year  
**Immunogen:** The antiserum was produced against synthesized phosphopeptide derived from human Amyloid  $\beta$  A4 around the phosphorylation site of threonine 743 (A-V-T<sup>P</sup>-P-E).  
**Purification:** The antibody was affinity-purified from rabbit antiserum by affinity-chromatography using epitope-specific phosphopeptide. The antibody against non-phosphopeptide was removed by chromatography using non-phosphopeptide corresponding to the phosphorylation site.  
**Specificity/Sensitivity:** Amyloid  $\beta$  A4 (phospho-Thr743/668) antibody detects endogenous levels of Amyloid  $\beta$  A4 only when phosphorylated at threonine 743.  
**Reactivity:** Human, Mouse, Rat  
**Applications:** WB: 1:500~1:3000 IHC: 1:50~1:100  
IF: 1:100~1:500 ELISA: 1:10000  
**References:** Ming-Sum Lee J. Cell Biol., Oct 2003; 163: 83.  
Tadashi Nakaya and Toshiharu Suzuki Genes Cells, Jun 2006; 11: 633 - 645  
Keun-A Chang, Mol. Cell. Biol., Jun 2006; 26: 4327 – 4338.  
Thor D. Stein J. Neurosci., Sep 2004; 24: 7707 - 7717.

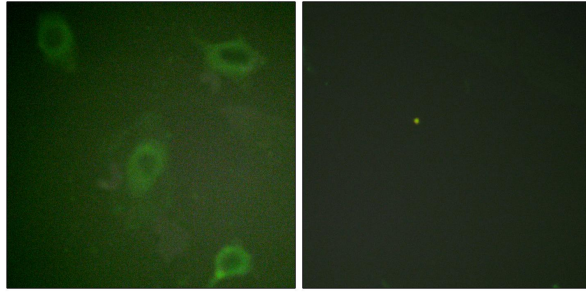


P-peptide - +

Immunohistochemical analysis of paraffin-embedded human brain tissue using Amyloid  $\beta$  A4 (phospho-Thr743/668) antibody.



Western blot analysis of extracts from HeLa cells, using Amyloid  $\beta$  A4 (phospho-Thr743/668) antibody.



P-peptide

-

+

Immunofluorescence analysis of HeLa cells, using  
Amyloid  $\beta$  A4 (phospho-Thr743/668) antibody.