



Web: www.anbobio.com
www.dijibio.com
Order: order@dijibio.com
Tel: (86) 519 8805 0026

MMP3 (Cleaved-Phe100) Antibody [#L0336]

Catalog Number: L0336

Concentration: 1mg/ml

Swiss-Prot No.: P08254

Other Names: Stromelysin-1 [Precursor], EC 3.4.24.17, Matrix metalloproteinase-3, MMP-3, Transin-1, SL-1, MMP3, STMY1

Storage/Stability: Store at -20°C/1 year

Form of Antibody: Rabbit IgG in phosphate buffered saline (without Mg²⁺ and Ca²⁺), pH 7.4, 150mM NaCl, 0.02% sodium azide and 50% glycerol.

Immunogen: The antiserum was produced against synthesized peptide derived from human MMP3.

Purification: The antibody was affinity-purified from

rabbit antiserum by affinity-chromatography using epitope-specific immunogen.

Specificity: MMP3 (Cleaved-Phe100) antibody detects endogenous levels of fragment of activated MMP3 resulting from cleavage adjacent to Phe100.

Reactivity: Human

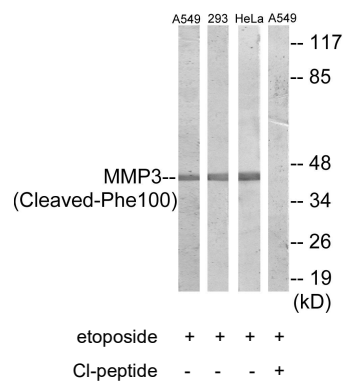
Applications: WB: 1:500~1:3000 ELISA: 1:20000

References:

Saus J., J. Biol. Chem. 263:6742-6745(1988).

Whitham S.E., Biochem. J. 240:913-916(1986).

Wilhelm S.M., Proc. Natl. Acad. Sci. U.S.A. 84:6725-6729(1987).



Western blot analysis of extracts from A549 cells and HeLa cells treated with etoposide (25uM, 24hours), 293 cells treated with etoposide (25uM, 1hour), using MMP3 (Cleaved-Phe100) antibody.