



Web: www.anbobio.com
www.dijibio.com
Order: order@dijibio.com
Tel: (86) 519 8805 0026

PARP (Cleaved-Asp214) Antibody [#L0365]

Catalog Number: L0365

Concentration: 1mg/ml

Swiss-Prot No.: P09874

Other Names: Poly [ADP-ribose] polymerase 1, EC 2.4.2.30, PARP-1, ADPRT, NAD(+)

ADP-ribosyltransferase 1, Poly[ADP-ribose] synthetase 1, PARP1, ADPRT, PPOL

Storage/Stability: Store at -20°C/1 year

Form of Antibody: Rabbit IgG in phosphate buffered saline (without Mg²⁺ and Ca²⁺), pH 7.4, 150mM NaCl, 0.02% sodium azide and 50% glycerol.

Immunogen: The antiserum was produced against synthesized peptide derived from human PARP.

Purification: The antibody was affinity-purified from rabbit antiserum by affinity-chromatography using epitope-specific immunogen.

Specificity: PARP (Cleaved-Asp214) antibody detects endogenous levels of fragment of activated PARP resulting from cleavage adjacent to Asp214.

Reactivity: Human, Mouse

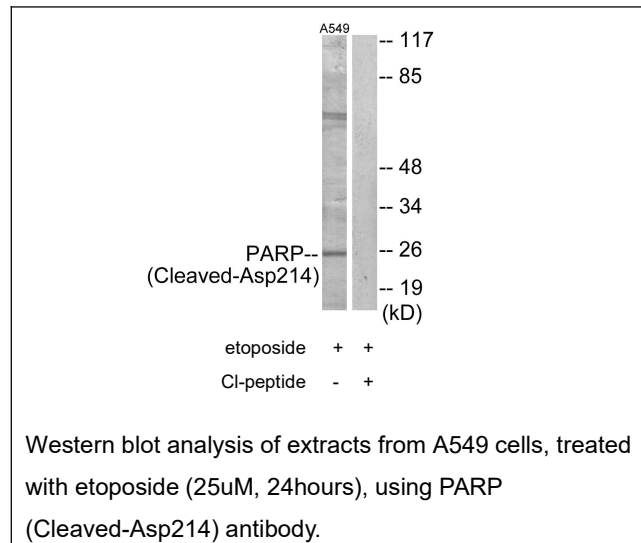
Applications: WB: 1:500~1:3000 ELISA: 1:20000

References:

Auer B., DNA 8:575-580(1989).

Uchida K., Biochem. Biophys. Res. Commun. 148:617-622(1987).

Kurosaki T., J. Biol. Chem. 262:15990-15997(1987).



For Research Use Only