



**Web:** [www.anbobio.com](http://www.anbobio.com)  
[www.dijibio.com](http://www.dijibio.com)  
**Order:** [order@dijibio.com](mailto:order@dijibio.com)  
**Tel:** (86) 519 8805 0026

## ZNF148 Antibody [#C11914]

**Catalog Number:** C11914

**Concentration:** 1mg/ml

**Swiss-Prot No.:** Q9UQR1

**Other Names:** Beta enolase repressor factor 1, G-rich box-binding protein, Transcription factor BFCOL1, Transcription factor ZBP-89, ZBP89, ZFP148, ZN148, ZNF148, Zinc finger DNA binding protein 89, Zinc finger protein 148

**Storage/Stability:** Store at -20°C/1 year

**Form of Antibody:** Rabbit IgG in phosphate buffered saline (without Mg<sup>2+</sup> and Ca<sup>2+</sup>), pH 7.4, 150mM NaCl, 0.02% sodium azide and 50% glycerol.

**Immunogen:** The antiserum was produced against synthesized peptide derived from internal of human

ZNF148.

**Purification:** The antibody was affinity-purified from rabbit antiserum by affinity-chromatography using epitope-specific immunogen.

**Specificity:** ZNF148 antibody detects endogenous levels of total ZNF148 protein.

**Reactivity:** Human, Mouse, Rat

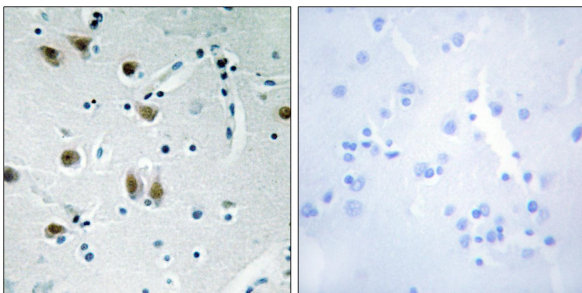
**Applications:** WB: 1:500~1:3000 IHC: 1:50~1:100  
ELISA: 1:1000

**References:**

Beausoleil S.A., Proc. Natl. Acad. Sci. U.S.A. 101:12130-12135(2004).

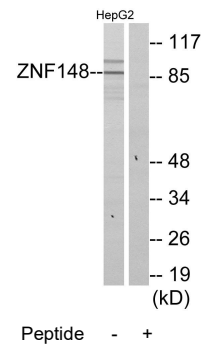
Boopathi E., J. Biol. Chem. 279:35242-35254(2004).

Beausoleil S.A., Nat. Biotechnol. 24:1285-1292(2006).



Peptide - +

Immunohistochemistry analysis of paraffin-embedded human brain tissue using ZNF148 antibody.



Peptide - +

Western blot analysis of extracts from HepG2 cells, using ZNF148 antibody.