



Web: [www.anbobio.com](http://www.anbobio.com)  
[www.dijibio.com](http://www.dijibio.com)  
Order: [order@dijibio.com](mailto:order@dijibio.com)  
Tel: (86) 519 8805 0026

## 14-3-3 $\gamma$ Antibody [#C12004]

**Catalog Number:** C12004

**Concentration:** 1mg/ml

**Swiss-Prot No.:** P61981

**Other Names:** 1433G, 143G, KCIP-1, Protein kinase C inhibitor protein-1, YWHAG

**Storage/Stability:** Store at -20°C/1 year

**Form of Antibody:** Rabbit IgG in phosphate buffered saline (without Mg<sup>2+</sup> and Ca<sup>2+</sup>), pH 7.4, 150mM NaCl, 0.02% sodium azide and 50% glycerol.

**Immunogen:** The antiserum was produced against synthesized peptide derived from internal of human 14-3-3  $\gamma$ .

**Purification:** The antibody was affinity-purified from rabbit antiserum by affinity-chromatography using epitope-specific immunogen.

**Specificity:** 14-3-3  $\gamma$  antibody detects endogenous levels of total 14-3-3  $\gamma$  protein.

**Reactivity:** Human, Mouse, Rat

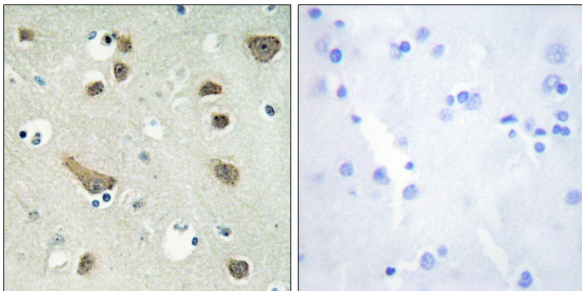
**Applications:** WB: 1:500~1:3000 IHC: 1:50~1:100  
IF: 1:100~1:500 ELISA: 1:1000

**References:**

Autieri M.V., DNA Cell Biol. 18:555-564(1999).

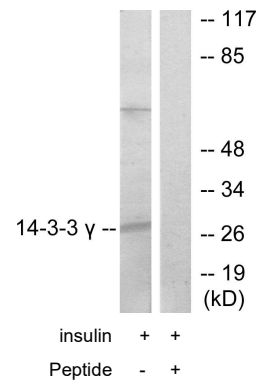
Horie M., Genomics 60:241-243(1999).

Hillier L.W., Nature 424:157-164(2003).

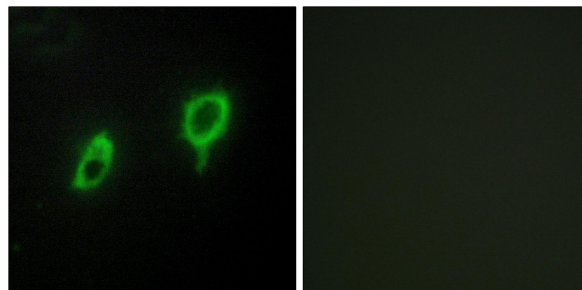


Peptide - +

Immunohistochemistry analysis of paraffin-embedded human brain tissue using 14-3-3  $\gamma$  antibody.



Western blot analysis of extracts from K562 cells, treated with insulin (0.01U/ml, 15mins), using 14-3-3  $\gamma$  antibody.



Peptide - +

Immunofluorescence analysis of COS7 cells, using 14-3-3  $\gamma$  antibody.