



Web: www.anbobio.com
www.dijibio.com
Order: order@dijibio.com
Tel: (86) 519 8805 0026

ARRDC2 Antibody [#C12060]

Catalog Number: C12060

Concentration: 1mg/ml

Swiss-Prot No.: Q8TBH0

Other Names: Arrestin domain-containing protein 2, ARRDC2, PP2703

Storage/Stability: Store at -20°C/1 year

Form of Antibody: Rabbit IgG in phosphate buffered saline (without Mg²⁺ and Ca²⁺), pH 7.4, 150mM NaCl, 0.02% sodium azide and 50% glycerol.

Immunogen: The antiserum was produced against synthesized peptide derived from internal of human ARRDC2.

Purification: The antibody was affinity-purified from

rabbit antiserum by affinity-chromatography using epitope-specific immunogen.

Specificity: ARRDC2 antibody detects endogenous levels of total ARRDC2 protein.

Reactivity: Human (Identities = 100%, Positives = 100%);
Mouse (Identities = 100%, Positives = 100%)

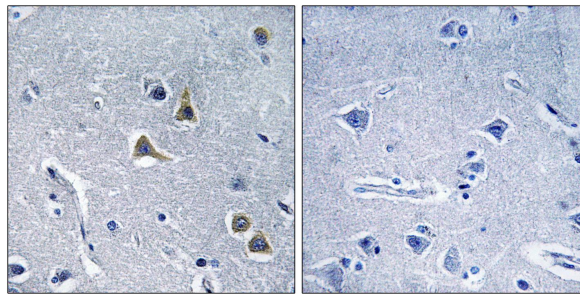
Applications: IHC: 1:50~1:100 ELISA: 1:40000

References:

Ota T., Nat. Genet. 36:40-45(2004).

Wan D., Proc. Natl. Acad. Sci. U.S.A. 101:15724-15729(2004).

The MGC Project Team, Genome Res. 14:2121-2127(2004).



Peptide

-

+

Immunohistochemistry analysis of paraffin-embedded human brain tissue, using ARRDC2 antibody.