



Web: [www.anbobio.com](http://www.anbobio.com)  
[www.dijibio.com](http://www.dijibio.com)  
Order: [order@dijibio.com](mailto:order@dijibio.com)  
Tel: (86) 519 8805 0026

## CDH17 Antibody [#C12092]

**Catalog Number:** C12092

**Concentration:** 1mg/ml

**Swiss-Prot No.:** Q12864

**Other Names:** CAD17, CADH, Intestinal peptide-associated transporter HPT-1, LI-cad, LI-cadherin, Liver-intestine-cadherin, cadherin, LI

**Storage/Stability:** Store at -20°C/1 year

**Form of Antibody:** Rabbit IgG in phosphate buffered saline (without Mg<sup>2+</sup> and Ca<sup>2+</sup>), pH 7.4, 150mM NaCl, 0.02% sodium azide and 50% glycerol.

**Immunogen:** The antiserum was produced against synthesized peptide derived from internal of human CDH17.

**Purification:** The antibody was affinity-purified from

rabbit antiserum by affinity-chromatography using epitope-specific immunogen.

**Specificity:** CDH17 antibody detects endogenous levels of total CDH17 protein.

**Reactivity:** Human

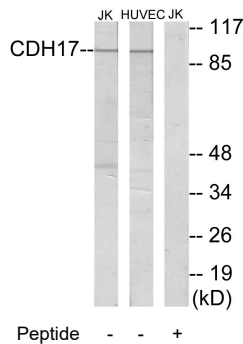
**Applications:** WB: 1:500~1:3000 IF: 1:100~1:500  
ELISA: 1:40000

**References:**

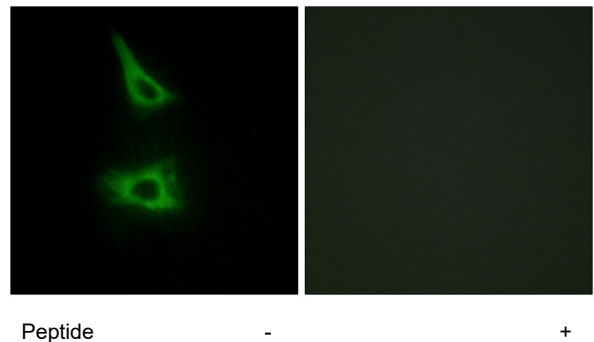
Dantzig A.H., Science 264:430-433(1994).

Boettinger A., Submitted (DEC-1994) to the EMBL/GenBank/DDBJ databases.

Beausoleil S.A., Proc. Natl. Acad. Sci. U.S.A. 101:12130-12135(2004).



Western blot analysis of extracts from Jurkat cells and HUVEC cells, using CDH17 antibody.



Immunofluorescence analysis of HeLa cells, using CDH17 antibody.