



Web: www.anbobio.com
www.dijibio.com
Order: order@dijibio.com
Tel: (86) 519 8805 0026

CD302 Antibody [#C12150]

Catalog Number: C12150

Concentration: 1mg/ml

Swiss-Prot No.: Q8IX05

Other Names: CD302 antigen [Precursor], C-type lectin domain family 13 member A, C-type lectin BIMLEC, Type I transmembrane C-type lectin receptor DCL-1, CD302, CLEC13A, DCL1, KIAA0022

Storage/Stability: Store at -20°C/1 year

Form of Antibody: Rabbit IgG in phosphate buffered saline (without Mg²⁺ and Ca²⁺), pH 7.4, 150mM NaCl, 0.02% sodium azide and 50% glycerol.

Immunogen: The antiserum was produced against synthesized peptide derived from internal of human CD302.

Purification: The antibody was affinity-purified from rabbit antiserum by affinity-chromatography using epitope-specific immunogen.

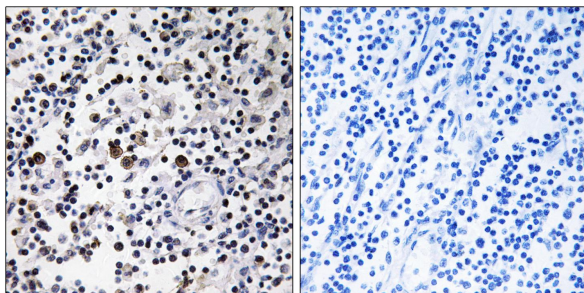
Specificity: CD302 antibody detects endogenous levels of total CD302 protein.

Reactivity: Human (Identities = 100%, Positives = 100%);
Mouse (Identities = 84%, Positives = 100%);
Rat (Identities = 84%, Positives = 100%)

Applications: WB: 1:500~1:3000 IHC: 1:50~1:100
ELISA: 1:40000

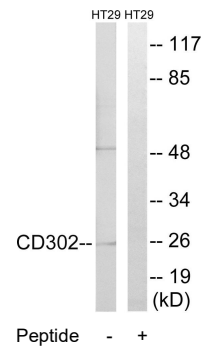
References:

Kato M., J. Biol. Chem. 278:34035-34041(2003).
Hillier L.W., Nature 434:724-731(2005).
Nomura N., DNA Res. 1:27-35(1994).



Peptide - +

Immunohistochemistry analysis of paraffin-embedded human lymph node tissue using CD302 antibody.



Peptide - +

Western blot analysis of extracts from HT-29 cells, using CD302 antibody.