



**Web:** [www.anbobio.com](http://www.anbobio.com)  
[www.dijibio.com](http://www.dijibio.com)  
**Order:** [order@dijibio.com](mailto:order@dijibio.com)  
**Tel:** (86) 519 8805 0026

## OR5M1/5M10 Antibody [#G915]

**Catalog Number:** G915

**Concentration:** 1mg/ml

**Swiss-Prot No.:** Q8NGP8

**Other Names:** Olfactory receptor 5M1; Olfactory receptor OR11-208; OST050

**Storage/Stability:** Store at -20°C/1 year

**Form of Antibody:** Rabbit IgG in phosphate buffered saline (without Mg<sup>2+</sup> and Ca<sup>2+</sup>), pH 7.4, 150mM NaCl, 0.02% sodium azide and 50% glycerol.

**Immunogen:** The antiserum was produced against synthesized peptide derived from internal of human OR5M1/5M10.

**Purification:** The antibody was affinity-purified from

rabbit antiserum by affinity-chromatography using epitope-specific immunogen.

**Specificity:** OR5M1/5M10 antibody detects endogenous levels of total OR5M1/5M10 protein.

**Reactivity:** Human

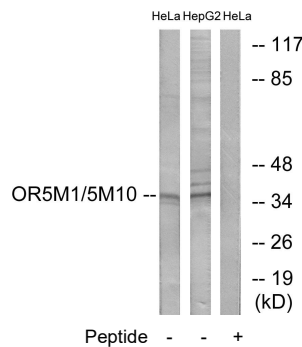
**Applications:** WB: 1:500~1:3000 IF: 1:100~1:500  
ELISA: 1:10000

**References:**

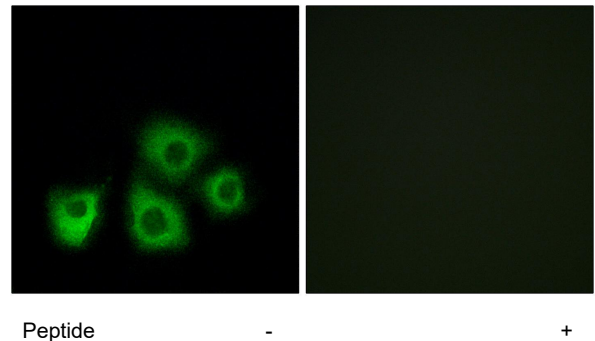
Suwa M., Submitted (JUL-2001) to the EMBL/GenBank/DDBJ databases.

Fuchs T., Genomics 80:295-302(2002).

Malnic B., Proc. Natl. Acad. Sci. U.S.A. 101:2584-2589(2004).



Western blot analysis of extracts from HeLa cells and HepG2 cells, using OR5M1/5M10 antibody.



Immunofluorescence analysis of MCF-7 cells, using OR5M1/5M10 antibody.