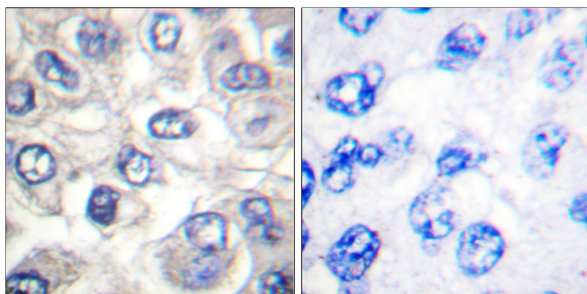




Web: www.anbobio.com
www.dijibio.com
Order: order@dijibio.com
Tel: (86) 519 8805 0026

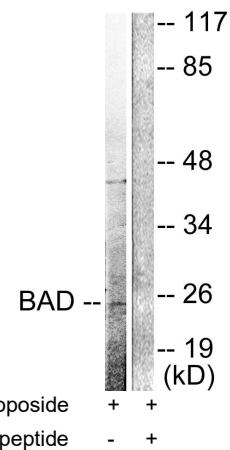
BAD (Cleaved-Asp71) Antibody [#L0102]

- Catalog Number:** L0102-1, L0102-2, L0102
Amount: 50µg/50µl, 100µg/100µl, 200µg/200µl
Swiss-Prot No. : Q92934
All Names: BBC2, BCL2L8, BCL-X/BCL-2 binding protein, BCL2 ANTAGONIST OF CELL DEATH BCL2-antagonist of cell death protein, BCL2-binding component 6, BCL2-binding protein
All Sites: Mouse: Asp71; Rat: Asp71
Form of Antibody: Rabbit IgG in phosphate buffered saline (without Mg²⁺ and Ca²⁺), pH 7.4, 150mM NaCl, 0.02% sodium azide and 50% glycerol.
Storage/Stability: Store at -20°C/1 year
Immunogen: The antiserum was produced against synthesized peptide derived from mouse BAD.
Purification: The antibody was affinity-purified from rabbit antiserum by affinity-chromatography using epitope-specific immunogen.
Specificity/Sensitivity: BAD (Cleaved-Asp71) antibody detects endogenous levels of fragment of activated BAD resulting from cleavage adjacent to Asp71.
Reactivity: Mouse, Rat
Applications: WB: 1:500~3000 IHC: 1:50~100
ELISA: 1:20000
References: W. Steven Donaldson, Bulletin of Canadian Petroleum Geology, Dec 1998; 46: 576 - 598.
DALE TSHUDY, Journal of Paleontology, Sep 2005; 79: 961 - 968.
Alexandre David, J. Cell Sci., Jan 2007; 120: 353 - 365.
Peng Jiang, Mol. Cell. Biol., Dec 2006; 26: 9071 - 9082.



Cl-Peptide - +

Immunohistochemical analysis of paraffin-embedded human breast carcinoma tissue, using BAD (Cleaved-Asp71) antibody (#L0102).



Western blot analysis of extracts from 293 cells, treated with Etoposide (25µM, 60mins), using BAD (Cleaved-Asp71) antibody (#L0102).

For Research Use Only