



Web: www.anbobio.com
www.dijibio.com
Order: order@dijibio.com
Tel: (86) 519 8805 0026

Caspase 3 (cleaved-Asp175) Antibody [L0103]

Catalog Number: L0103

Concentration: 1mg/ml

Swiss-Prot No.: P42574

Other Names: Apopain precursor, CASP-3, CPP-32, CPP32, Caspase-3, Cysteine protease CPP32, ICE3, SCA-1, SREBP cleavage activity 1, Yama protein

Storage/Stability: Store at -20°C/1 year

Form of Antibody: Rabbit IgG in phosphate buffered saline (without Mg²⁺ and Ca²⁺), pH 7.4, 150mM NaCl, 0.02% sodium azide and 50% glycerol.

Immunogen: The antiserum was produced against synthesized peptide derived from internal of human Caspase 3.

Purification: The antibody was affinity-purified from rabbit antiserum by affinity-chromatography using epitope-specific immunogen.

Specificity: Caspase 3 (cleaved-Asp175) antibody detects endogenous levels of fragment of activated Caspase 3 resulting from cleavage adjacent to Asp175.

Reactivity: Human (Identities = 100%, Positives = 100%)

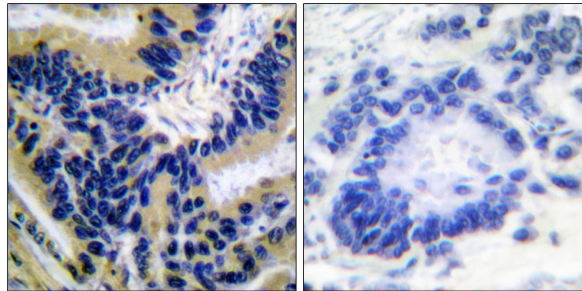
Applications: IHC: 1:50~1:100 ELISA: 1:20000

References:

John K. Jain, Biol Reprod, Aug 2005; 73: 382 - 388.

C.S. Thota, Biol Reprod, Dec 2005; 73: 1191 - 1198.

Koichi Ushizawa, Biol Reprod, Feb 2006; 74: 344 - 351.



Peptide

-

+

Immunohistochemical analysis of paraffin-embedded human lung carcinoma tissue, using Caspase 3 (cleaved-Asp175) antibody.

For Research Use Only