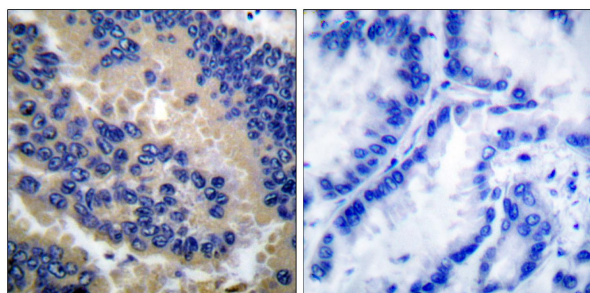




Web: www.anbobio.com
www.dijibio.com
Order: order@dijibio.com
Tel: (86) 519 8805 0026

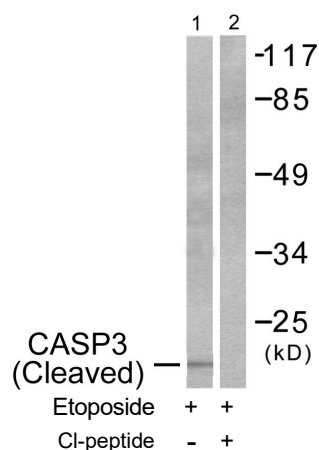
Caspase 3 (Cleaved-Asp175) Antibody [#L0104]

- Catalog Number:** L0104
Amount: 50µg/50µl, 100µg/100µl, 200µg/200µl
Swiss-Prot No. : P42574
All Names: Apopain precursor, CASP-3, CPP-32, CPP32, Caspase-3, Cysteine protease CPP32, ICE3, SCA-1, SREBP cleavage activity 1, Yama protein
All Sites: Human: Asp175; Mouse: Asp175; Rat: Asp175
Form of Antibody: Rabbit IgG in phosphate buffered saline (without Mg²⁺ and Ca²⁺), pH 7.4, 150mM NaCl, 0.02% sodium azide and 50% glycerol.
Storage/Stability: Store at -20°C/1 year
Immunogen: The antiserum was produced against synthesized peptide derived from human Caspase 3.
Purification: The antibody was affinity-purified from rabbit antiserum by affinity-chromatography using epitope-specific immunogen.
Specificity/Sensitivity: Caspase 3 (cleaved-Asp175) antibody detects endogenous levels of fragment of activated Caspase 3 resulting from cleavage adjacent to Asp175.
Reactivity: Human, Mouse, Rat
Applications: WB: 1:500~1:3000 IHC: 1:50~1:100
ELISA: 1:20000
References: John K. Jain, Biol Reprod, Aug 2005; 73: 382 - 388.
C.S. Thota, Biol Reprod, Dec 2005; 73: 1191 - 1198.
Koichi Ushizawa, Biol Reprod, Feb 2006; 74: 344 - 351.
ULRICH STEIDL, Ann. N.Y. Acad. Sci., Jun 2005; 1044: 94 - 108.



Cl-peptide - +

Immunohistochemical analysis of paraffin-embedded human lung carcinoma tissue, using Caspase 3 (cleaved-Asp175) antibody.



Western blot analysis of extracts from 293 cells, treated with Etoposide (25uM, 60mins), using Caspase 3 (cleaved-Asp175) antibody.

For Research Use Only