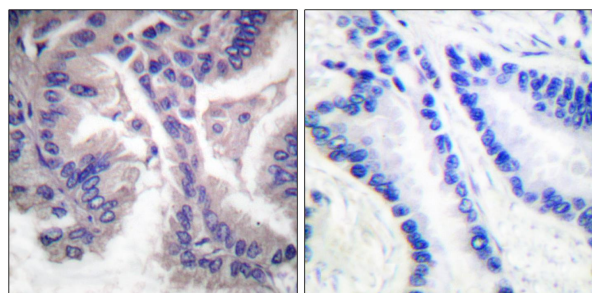




Web: www.anbobio.com
www.dijibio.com
Order: order@dijibio.com
Tel: (86) 519 8805 0026

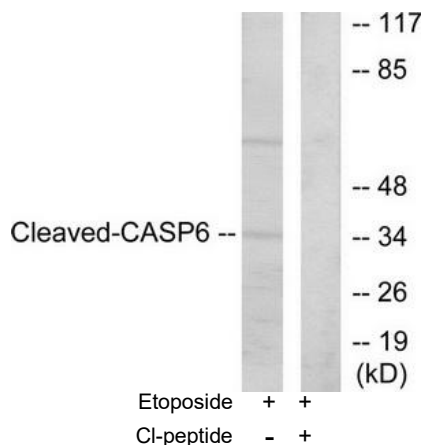
Caspase 6 (Cleaved-Asp162) Antibody [#L0107]

- Catalog Number:** L0107
Amount: 50µg/50µl, 100µg/100µl, 200µg/200µl
Swiss-Prot No. : O08738
All Names: Caspase-6 [Precursor], EC 3.4.22. CASP-6, Apoptotic protease Mch-2, CASP6, MCH2
All Sites: Mouse: Asp162; Rat: Asp162
Form of Antibody: Rabbit IgG in phosphate buffered saline (without Mg²⁺ and Ca²⁺), pH 7.4, 150mM NaCl, 0.02% sodium azide and 50% glycerol.
Storage/Stability: Store at -20°C/1 year
Immunogen: The antiserum was produced against synthesized peptide derived from mouse Caspase 6.
Purification: The antibody was affinity-purified from rabbit antiserum by affinity-chromatography using epitope-specific immunogen.
Specificity/Sensitivity: Caspase 6 (cleaved-Asp162) antibody detects endogenous levels of fragment of activated Caspase 6 resulting from cleavage adjacent to Asp162.
Reactivity: Mouse, Rat
Applications: WB: 1:500~1:3000 IHC: 1:50~1:100
ELISA: 1:10000
References: Manish Kumar, Nucleic Acids Res., Jul 2005; 33: W154 - W159.
Lijun Zhu, Mol. Cancer Ther., May 2005; 4: 787 - 798.
Zhi Chen, J. Immunol., Oct 2003; 171: 3627.
Ora Schueler-Furman, Science, Oct 2005; 310: 638 - 642.



Cl-peptide - +

Immunohistochemical analysis of paraffin-embedded human lung carcinoma tissue, using Caspase 6 (cleaved-Asp162) antibody.



Western blot analysis of extracts from HeLa cells, treated with etoposide (25µM, 1 hour), using Caspase 6 (cleaved-Asp162) antibody.

For Research Use Only