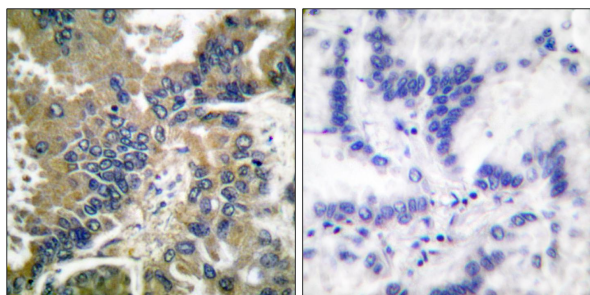




Web: www.anbobio.com
www.dijibio.com
Order: order@dijibio.com
Tel: (86) 519 8805 0026

Caspase 1 (Cleaved-Asp210) Antibody [#L0114]

- Catalog Number:** L0114-1, L0114-2, L0114
Amount: 50µg/50µl, 100µg/100µl, 200µg/200µl
Swiss-Prot No. : P29466
All Names: CASP-1, ICE, IL-1 beta converting enzyme, IL-1BC, IL1BCE, caspase-1, interleukin-1 beta convertase, interleukin-1 beta converting enzyme, p45
All Sites: Human: Asp210
Form of Antibody: Rabbit IgG in phosphate buffered saline (without Mg²⁺ and Ca²⁺), pH 7.4, 150mM NaCl, 0.02% sodium azide and 50% glycerol.
Storage/Stability: Store at -20°C/1 year
Immunogen: The antiserum was produced against synthesized peptide derived from human Caspase 1.
Purification: The antibody was affinity-purified from rabbit antiserum by affinity-chromatography using epitope-specific immunogen.
Specificity/Sensitivity: Caspase 1 (Cleaved-Asp210) antibody detects endogenous levels of fragment of activated Caspase 1 resulting from cleavage adjacent to Asp210.
Reactivity: Human
Applications: WB: 1:500~1:3000 IHC: 1:50~100
ELISA: 1:10000
References: Victor Elharrar, FASEB J, Mar 2006; 20: A228.
R Matsumura, Ann Rheum Dis, May 2001; 60: 473 - 482.
Adriana López Ponte Stem Cells, Mar 2007; 10.1634/stemcells.2007-0054.
A I Catrina, Ann Rheum Dis, Oct 2002; 61: 934 - 936.

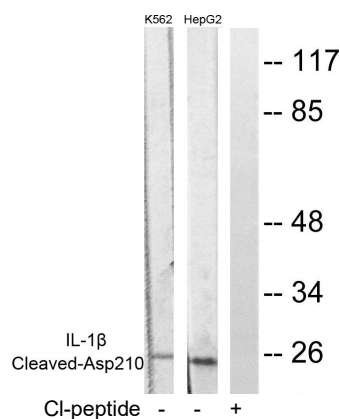


Cl-peptide

-

+

Immunohistochemical analysis of paraffin-embedded human lung carcinoma tissue, using Caspase 1 (Cleaved-Asp210) antibody (#L0114).



Western blot analysis of extracts from K562 cells and HepG2 cells, using Caspase 1 (Cleaved-Asp210) antibody (#L0114).

For Research Use Only