



**Web:** [www.anbobio.com](http://www.anbobio.com)  
[www.dijibio.com](http://www.dijibio.com)  
**Order:** [order@dijibio.com](mailto:order@dijibio.com)  
**Tel:** (86) 519 8805 0026

## IPPK Antibody [#C11708]

**Catalog Number:** C11708

**Concentration:** 1mg/ml

**Swiss-Prot No.:** Q9H8X2

**Other Names:** EC 2.7.1.158;

Inositol-1,3,4,5,6-pentakisphosphate 2-kinase;

Ins(1,3,4,5,6)P5 2-kinase; InsP5 2-kinase; IPK1 homolog

**Storage/Stability:** Store at -20°C/1 year

**Form of Antibody:** Rabbit IgG in phosphate buffered saline (without Mg<sup>2+</sup> and Ca<sup>2+</sup>), pH 7.4, 150mM NaCl, 0.02% sodium azide and 50% glycerol.

**Immunogen:** The antiserum was produced against synthesized peptide derived from internal of human IPPK.

**Purification:** The antibody was affinity-purified from rabbit antiserum by affinity-chromatography using

epitope-specific immunogen.

**Specificity:** IPPK antibody detects endogenous levels of total IPPK protein.

**Reactivity:** Human (Identities = 100%, Positives = 100%);

Mouse (Identities = 100%, Positives = 100%);

Rat (Identities = 100%, Positives = 100%)

**Applications:** IHC: 1:50~1:100 IF: 1:100~1:500

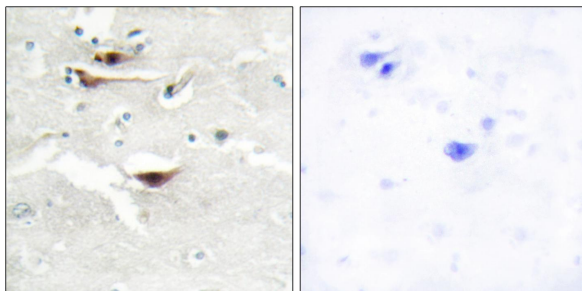
ELISA: 1:5000

**References:**

Verbsky J.W., J. Biol. Chem. 277:31857-31862(2002).

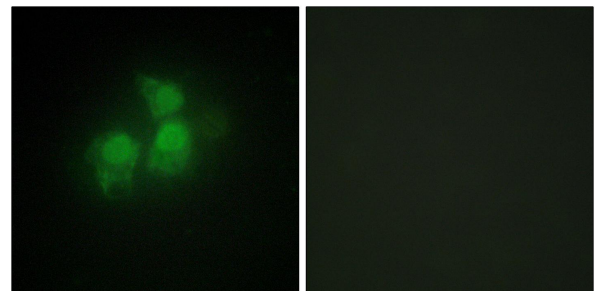
Hulme D.J., Submitted (FEB-2001) to the EMBL/GenBank/DDBJ databases.

Ota T., Nat. Genet. 36:40-45(2004).



Peptide - +

Immunohistochemistry analysis of paraffin-embedded human brain tissue, using IPPK antibody.



Peptide - +

Immunofluorescence analysis of HepG2 cells, using IPPK antibody.