



Web: www.anbobio.com
www.dijibio.com
Order: order@dijibio.com
Tel: (86) 519 8805 0026

DUS2L Antibody [#C11772]

Catalog Number: C11772

Concentration: 1mg/ml

Swiss-Prot No.: Q9NX74

Other Names: tRNA-dihydrouridine synthase 2-like, EC 1.-.-., hDUS2, Up-regulated in lung cancer, URLC8, DUS2L, DUS2

Storage/Stability: Store at -20°C/1 year

Form of Antibody: Rabbit IgG in phosphate buffered saline (without Mg²⁺ and Ca²⁺), pH 7.4, 150mM NaCl, 0.02% sodium azide and 50% glycerol.

Immunogen: The antiserum was produced against synthesized peptide derived from C-terminal of human DUS2L.

Purification: The antibody was affinity-purified from rabbit antiserum by affinity-chromatography using epitope-specific immunogen.

Specificity: DUS2L antibody detects endogenous levels of total DUS2L protein.

Reactivity: Human, Mouse

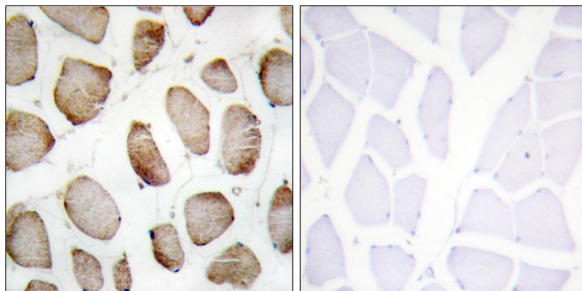
Applications: WB: 1:500~1:3000 IHC: 1:50~1:100
ELISA: 1:20000

References:

Ota T., Nat. Genet. 36:40-45(2004).

The MGC Project Team; Genome Res. 14:2121-2127(2004).

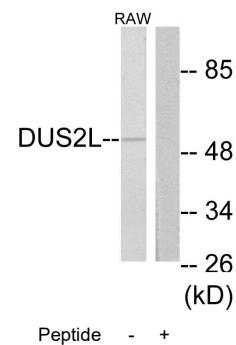
Kato T., Cancer Res. 65:5638-5646(2005).



Peptide -

+

Immunohistochemistry analysis of paraffin-embedded human skeletal muscle using DUS2L antibody.



Peptide -

+

Western blot analysis of extracts from RAW264.7 cells, using DUS2L antibody.