



Web: [www.anbobio.com](http://www.anbobio.com)  
[www.dijibio.com](http://www.dijibio.com)  
Order: [order@dijibio.com](mailto:order@dijibio.com)  
Tel: (86) 519 8805 0026

## Cytochrome P450 26C1 Antibody [#C12255]

**Catalog Number:** C12255

**Concentration:** 1mg/ml

**Swiss-Prot No.:** Q6V0L0

**Other Names:** Cytochrome P450 26B1, EC 1.14.-.-, P450 26A2, P450 retinoic acid-inactivating 2, P450RAI-2, Retinoic acid-metabolizing cytochrome, CYP26B1, CYP26A2, P450RAI2, CP26B

**Storage/Stability:** Store at -20°C/1 year

**Form of Antibody:** Rabbit IgG in phosphate buffered saline (without Mg<sup>2+</sup> and Ca<sup>2+</sup>), pH 7.4, 150mM NaCl, 0.02% sodium azide and 50% glycerol.

**Immunogen:** The antiserum was produced against synthesized peptide derived from internal of human Cytochrome P450 26C1.

**Purification:** The antibody was affinity-purified from rabbit antiserum by affinity-chromatography using epitope-specific immunogen.

**Specificity:** Cytochrome P450 26C1 antibody detects endogenous levels of total Cytochrome P450 26C1 protein.

**Reactivity:** Human (Identities = 100%, Positives = 100%)

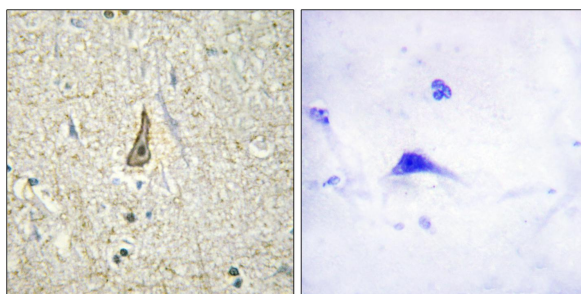
**Applications:** IHC: 1:50~1:100 ELISA: 1:40000

**References:**

White J.A., Proc. Natl. Acad. Sci. U.S.A. 97:6403-6408(2000).

Hillier L.W., Nature 434:724-731(2005).

The MGC Project Team, me Res. 14:2121-2127(2004).



Peptide - +

Immunohistochemistry analysis of paraffin-embedded human brain tissue using Cytochrome P450 26C1 antibody.