



Web: [www.anbobio.com](http://www.anbobio.com)  
[www.dijibio.com](http://www.dijibio.com)  
Order: [order@dijibio.com](mailto:order@dijibio.com)  
Tel: (86) 519 8805 0026

## HSPB2 Antibody [#C12418]

**Catalog Number:** C12418

**Concentration:** 1mg/ml

**Swiss-Prot No.:** Q16082

**Other Names:** DMPK-binding protein; heat-shock protein beta-2; HSP27; MKBP

**Storage/Stability:** Store at -20°C/1 year

**Form of Antibody:** Rabbit IgG in phosphate buffered saline (without Mg<sup>2+</sup> and Ca<sup>2+</sup>), pH 7.4, 150mM NaCl, 0.02% sodium azide and 50% glycerol.

**Immunogen:** The antiserum was produced against synthesized peptide derived from internal of human HSPB2.

**Purification:** The antibody was affinity-purified from rabbit antiserum by affinity-chromatography using epitope-specific immunogen.

**Specificity:** HSPB2 antibody detects endogenous levels of total HSPB2 protein.

**Reactivity:** Human, Mouse, Rat

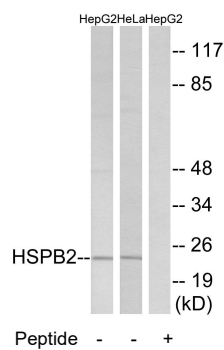
**Applications:** WB: 1:500~1:3000 IF: 1:100~1:500  
ELISA: 1:40000

**References:**

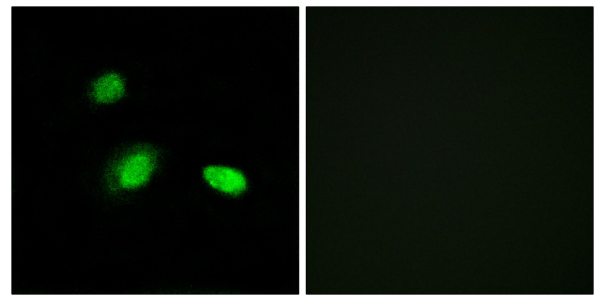
Iwaki A., Genomics 45:386-394(1997).

Suzuki A., J. Cell Biol. 140:1113-1124(1998).

Elisei R., J. Endocrinol. Invest. 16:533-540(1993).



Western blot analysis of extracts from HepG2 cells and HeLa cells, using HSPB2 antibody.



Peptide -

-

+

Immunofluorescence analysis of A549 cells, using HSPB2 antibody.