



**Web:** [www.anbobio.com](http://www.anbobio.com)  
[www.dijibio.com](http://www.dijibio.com)  
**Order:** [order@dijibio.com](mailto:order@dijibio.com)  
**Tel:** (86) 519 8805 0026

## BCLW Antibody [#C13031]

**Catalog Number:** C13031

**Concentration:** 1mg/ml

**Swiss-Prot No.:** Q92843

**Other Names:** Apoptosis regulator Bcl-W, Bcl-2-like 2 protein, BCL2L2, BCLW, KIAA0271

**Storage/Stability:** Store at -20°C/1 year

**Form of Antibody:** Rabbit IgG in phosphate buffered saline (without Mg<sup>2+</sup> and Ca<sup>2+</sup>), pH 7.4, 150mM NaCl, 0.02% sodium azide and 50% glycerol.

**Immunogen:** The antiserum was produced against synthesized peptide derived from internal of human BCLW.

**Purification:** The antibody was affinity-purified from rabbit antiserum by affinity-chromatography using epitope-specific immunogen.

**Specificity:** BCLW antibody detects endogenous levels of total BCLW protein.

**Reactivity:** Human, Mouse, Rat

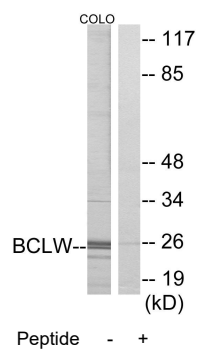
**Applications:** WB: 1:500~1:3000 IF: 1:100~1:500  
ELISA: 1:10000

**References:**

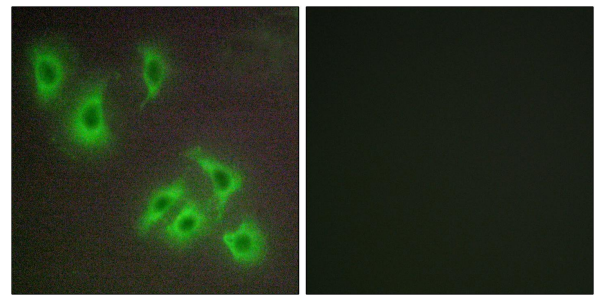
Gibson L., *Oncogene* 13:665-675(1996).

Nagase T., *DNA Res.* 3:321-329(1996).

O'Reilly L.A., *Cell Death Differ.* 8:486-494(2001).



Western blot analysis of extracts from COLO cells, using BCLW antibody.



Immunofluorescence analysis of HepG2 cells, using BCLW antibody.