



Web: [www.anbobio.com](http://www.anbobio.com)  
[www.dijibio.com](http://www.dijibio.com)  
Order: [order@dijibio.com](mailto:order@dijibio.com)  
Tel: (86) 519 8805 0026

## Collagen V $\alpha$ 2 Antibody [#C12202]

**Catalog Number:** C12202

**Concentration:** 1mg/ml

**Swiss-Prot No.:** P05997

**Other Names:** Collagen alpha-2(V) chain , CO5A2

**Storage/Stability:** Store at -20°C/1 year

**Form of Antibody:** Rabbit IgG in phosphate buffered saline (without Mg<sup>2+</sup> and Ca<sup>2+</sup>), pH 7.4, 150mM NaCl, 0.02% sodium azide and 50% glycerol.

**Immunogen:** The antiserum was produced against synthesized peptide derived from internal of human Collagen V  $\alpha$ 2.

**Purification:** The antibody was affinity-purified from

rabbit antiserum by affinity-chromatography using epitope-specific immunogen.

**Specificity:** Collagen V  $\alpha$ 2 antibody detects endogenous levels of total Collagen V  $\alpha$ 2 protein.

**Reactivity:** Human (Identities = 100%, Positives = 100%)

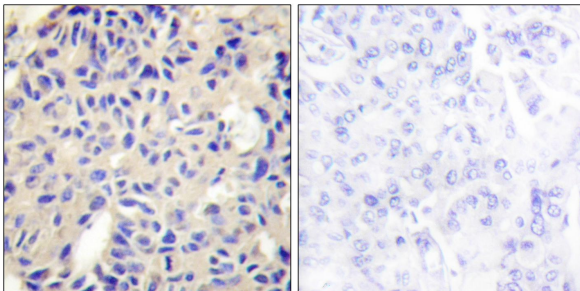
**Applications:** IHC: 1:50~1:100 IF: 1:100~1:500  
ELISA: 1:40000

**References:**

Hillier L.W., Nature 434:724-731(2005).

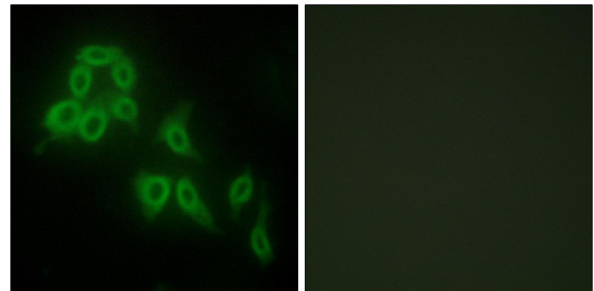
Valkkila M., Matrix Biol. 20:357-366(2001).

Greenspan D.S., Gene Expr. 1:29-39(1991).



Peptide - +

Immunohistochemistry analysis of paraffin-embedded human breast carcinoma tissue using Collagen V  $\alpha$ 2 antibody.



Peptide - +

Immunofluorescence analysis of HepG2 cells, using Collagen V  $\alpha$ 2 antibody.