



Web: [www.anbobio.com](http://www.anbobio.com)  
[www.dijibio.com](http://www.dijibio.com)  
Order: [order@dijibio.com](mailto:order@dijibio.com)  
Tel: (86) 519 8805 0026

## Collagen VI $\alpha$ 1 Antibody [#C12204]

**Catalog Number:** C12204

**Concentration:** 1mg/ml

**Swiss-Prot No.:** P12109

**Other Names:** Collagen alpha-1(VI) chain, CO6A1

**Storage/Stability:** Store at  $-20^{\circ}\text{C}$ /1 year

**Form of Antibody:** Rabbit IgG in phosphate buffered saline (without  $\text{Mg}^{2+}$  and  $\text{Ca}^{2+}$ ), pH 7.4, 150mM NaCl, 0.02% sodium azide and 50% glycerol.

**Immunogen:** The antiserum was produced against synthesized peptide derived from internal of human Collagen VI  $\alpha$ 1.

**Purification:** The antibody was affinity-purified from

rabbit antiserum by affinity-chromatography using epitope-specific immunogen.

**Specificity:** Collagen VI  $\alpha$ 1 antibody detects endogenous levels of total Collagen VI  $\alpha$ 1 protein.

**Reactivity:** Human (Identities = 100%, Positives = 100%);  
Mouse (Identities = 81%, Positives = 100%)

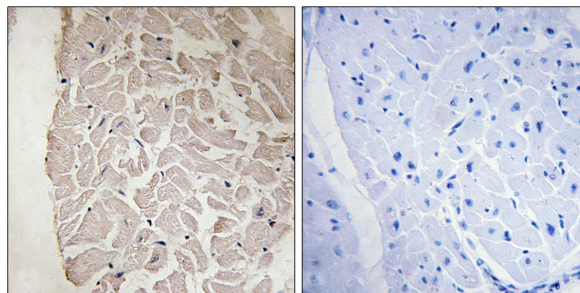
**Applications:** IHC: 1:50~1:100 ELISA: 1:10000

**References:**

Tillet E., Eur. J. Biochem. 221:177-185(1994).

Trikka D., Mamm. Genome 8:342-345(1997).

Scacheri P.C., Neurology 58:593-602(2002).



Peptide

-

+

Immunohistochemistry analysis of paraffin-embedded human heart tissue using Collagen VI  $\alpha$ 1 antibody.