



Web: [www.anbobio.com](http://www.anbobio.com)

[www.dijibio.com](http://www.dijibio.com)

Order: [order@dijibio.com](mailto:order@dijibio.com)

Tel: (86) 519 8805 0026

## Collagen VI $\alpha$ 3 Antibody [#C12206]

**Catalog Number:** C12206

**Concentration:** 1mg/ml

**Swiss-Prot No.:** P12111

**Other Names:** Collagen alpha-3(VI) chain, CO6A3

**Storage/Stability:** Store at  $-20^{\circ}\text{C}$ /1 year

**Form of Antibody:** Rabbit IgG in phosphate buffered saline (without  $\text{Mg}^{2+}$  and  $\text{Ca}^{2+}$ ), pH 7.4, 150mM NaCl, 0.02% sodium azide and 50% glycerol.

**Immunogen:** The antiserum was produced against synthesized peptide derived from internal of human Collagen VI  $\alpha$ 3.

**Purification:** The antibody was affinity-purified from

rabbit antiserum by affinity-chromatography using epitope-specific immunogen.

**Specificity:** Collagen VI  $\alpha$ 3 antibody detects endogenous levels of total Collagen VI  $\alpha$ 3 protein.

**Reactivity:** Human (Identities = 100%, Positives = 100%);  
Mouse (Identities = 100%, Positives = 100%)

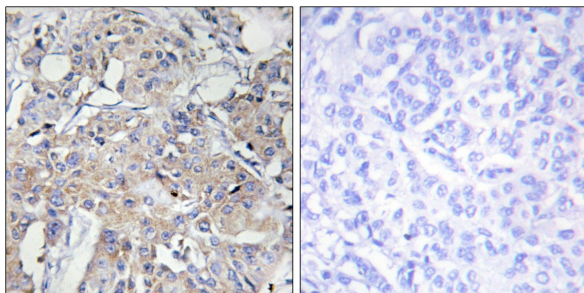
**Applications:** IHC: 1:50~1:100 IF: 1:100~1:500  
ELISA: 1:40000

**References:**

Chu M.-L., EMBO J. 9:385-393(1990).

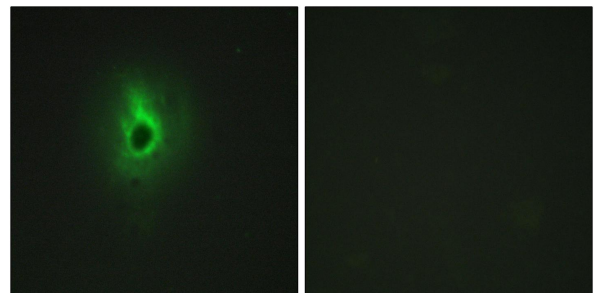
Zanussi S., J. Biol. Chem. 267:24082-24089(1992).

Liu T., J. Proteome Res. 4:2070-2080(2005).



Peptide - +

Immunohistochemistry analysis of paraffin-embedded human breast carcinoma tissue using Collagen VI  $\alpha$ 3 antibody.



Peptide - +

Immunofluorescence analysis of HeLa cells, using Collagen VI  $\alpha$ 3 antibody.