



Web: www.anbobio.com
www.dijibio.com
Order: order@dijibio.com
Tel: (86) 519 8805 0026

XRCC3 Antibody [#C13130]

Catalog Number: C13130

Concentration: 1mg/ml

Swiss-Prot No.: O43542

Other Names: DNA-repair protein XRCC3, X-ray repair cross-complementing protein 3

Storage/Stability: Store at -20°C/1 year

Form of Antibody: Rabbit IgG in phosphate buffered saline (without Mg²⁺ and Ca²⁺), pH 7.4, 150mM NaCl, 0.02% sodium azide and 50% glycerol.

Immunogen: The antiserum was produced against synthesized peptide derived from internal of human XRCC3.

Purification: The antibody was affinity-purified from rabbit antiserum by affinity-chromatography using epitope-specific immunogen.

Specificity: XRCC3 antibody detects endogenous levels of total XRCC3 protein.

Reactivity: Human (Identities = 100%, Positives = 100%)

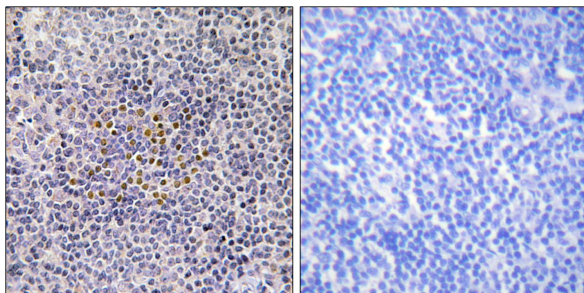
Applications: IHC: 1:50~1:100 IF: 1:100~1:500
ELISA: 1:20000

References:

Liu N., Mol. Cell 1:783-793(1998).

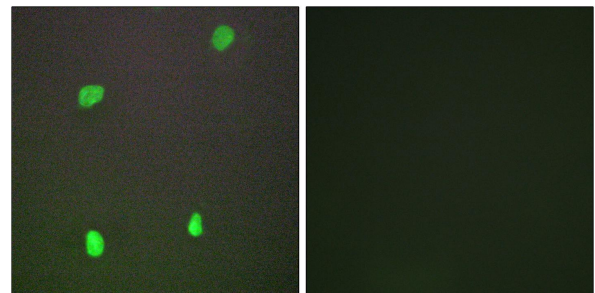
Miller K.A., J. Biol. Chem. 277:8406-8411(2002).

Liu N., Nucleic Acids Res. 30:1009-1015(2002).



Peptide - +

Immunohistochemistry analysis of paraffin-embedded human tonsil tissue using XRCC3 antibody.



Peptide - +

Immunofluorescence analysis of COS-7 cells, using XRCC3 antibody.