



Web: www.anbobio.com
www.dijibio.com
Order: order@dijibio.com
Tel: (86) 519 8805 0026

MRPL13 Antibody [#C14057]

Catalog Number: C14057

Concentration: 1mg/ml

Swiss-Prot No.: Q9BYD1

Other Names: 39S ribosomal protein L13, mitochondrial; L13mt; MRP-L13; MRPL13

Storage/Stability: Store at -20°C/1 year

Form of Antibody: Rabbit IgG in phosphate buffered saline (without Mg²⁺ and Ca²⁺), pH 7.4, 150mM NaCl, 0.02% sodium azide and 50% glycerol.

Immunogen: The antiserum was produced against synthesized peptide derived from C-terminal of human MRPL13.

Purification: The antibody was affinity-purified from rabbit antiserum by affinity-chromatography using

epitope-specific immunogen.

Specificity: MRPL13 antibody detects endogenous levels of total MRPL13 protein.

Reactivity: Human (Identities = 100%, Positives = 100%);
Mouse (Identities = 88%, Positives = 100%);
Rat (Identities = 88%, Positives = 100%)

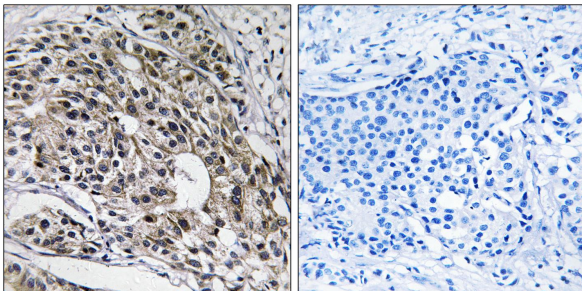
Applications: WB: 1:500~1:3000 IHC: 1:50~1:100
ELISA: 1:40000

References:

Suzuki T., J. Biol. Chem. 276:21724-21736(2001).

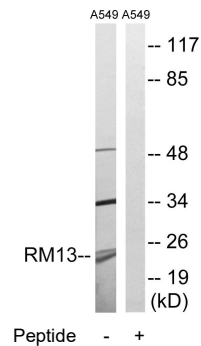
Ren S., Submitted (DEC-1998) to the EMBL/GenBank/DDBJ databases.

The MGC Project Team; Genome Res. 14:2121-2127(2004).



Peptide - +

Immunohistochemistry analysis of paraffin-embedded human breast carcinoma tissue using MRPL13 antibody.



Peptide - +

Western blot analysis of extracts from A549 cells, using MRPL13 antibody.