



Web: www.anbobio.com
www.dijibio.com
Order: order@dijibio.com
Tel: (86) 519 8805 0026

RPS20 Antibody [#C14106]

Catalog Number: C14106

Concentration: 1mg/ml

Swiss-Prot No.: P60866

Other Names: 40S ribosomal protein S20; RS20

Storage/Stability: Store at -20°C/1 year

Form of Antibody: Rabbit IgG in phosphate buffered saline (without Mg²⁺ and Ca²⁺), pH 7.4, 150mM NaCl, 0.02% sodium azide and 50% glycerol.

Immunogen: The antiserum was produced against synthesized peptide derived from internal of human RPS20.

Purification: The antibody was affinity-purified from

rabbit antiserum by affinity-chromatography using epitope-specific immunogen.

Specificity: RPS20 antibody detects endogenous levels of total RPS20 protein.

Reactivity: Human, Mouse, Rat

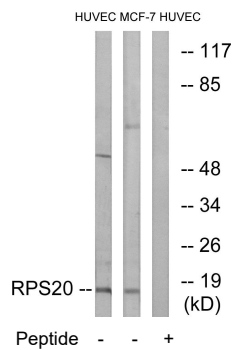
Applications: WB: 1:500~1:3000 IF: 1:100~1:500
ELISA: 1:40000

References:

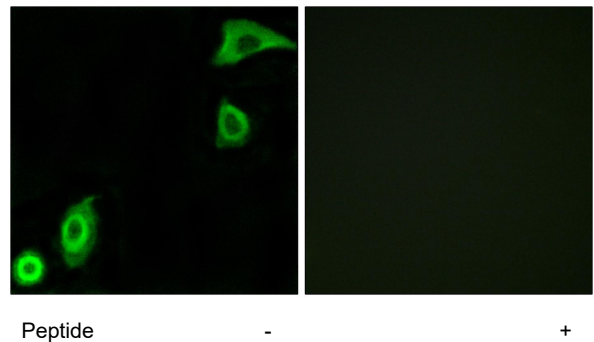
Chu W., Nucleic Acids Res. 21:1672-1672(1993).

Yoshihama M., Genome Res. 12:379-390(2002).

The MGC Project Team; Genome Res. 14:2121-2127(2004).



Western blot analysis of extracts from HUVEC cells and MCF-7 cells, using RPS20 antibody.



Immunofluorescence analysis of A549 cells, using RPS20 antibody.