



Web: www.anbobio.com
www.dijibio.com
Order: order@dijibio.com
Tel: (86) 519 8805 0026

AZI1 Antibody [#C14137]

Catalog Number: C14137

Concentration: 1mg/ml

Swiss-Prot No.: Q9UPN4

Other Names: 5-azacytidine-induced 1; centrosomal protein of 131 kDa; Cep131; pre-acrosome localization 1

Storage/Stability: Store at -20°C/1 year

Form of Antibody: Rabbit IgG in phosphate buffered saline (without Mg²⁺ and Ca²⁺), pH 7.4, 150mM NaCl, 0.02% sodium azide and 50% glycerol.

Immunogen: The antiserum was produced against synthesized peptide derived from internal of human AZI1.

Purification: The antibody was affinity-purified from rabbit antiserum by affinity-chromatography using

epitope-specific immunogen.

Specificity: AZI1 antibody detects endogenous levels of total AZI1 protein.

Reactivity: Human (Identities = 100%, Positives = 100%);
Mouse (Identities = 100%, Positives = 100%);
Rat (Identities = 100%, Positives = 100%)

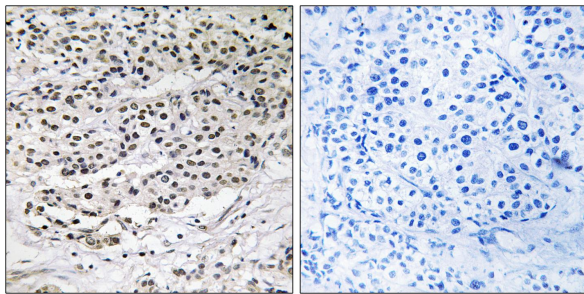
Applications: WB: 1:500~1:3000 IHC: 1:50~1:100
ELISA: 1:40000

References:

Kikuno R., DNA Res. 6:197-205(1999).

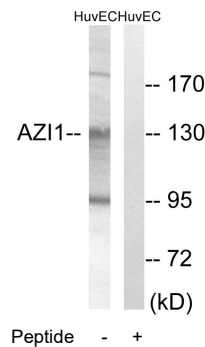
Andersen J.S., Nature 426:570-574(2003).

Olsen J.V., Cell 127:635-648(2006).



Peptide - +

Immunohistochemistry analysis of paraffin-embedded human breast carcinoma tissue using AZI1 antibody.



Western blot analysis of extracts from HUVEC cells, using AZI1 antibody.