



Web: www.anbobio.com
www.dijibio.com
Order: order@dijibio.com
Tel: (86) 519 8805 0026

RPL3L Antibody [#C14183]

Catalog Number: C14183

Concentration: 1mg/ml

Swiss-Prot No.: Q92901

Other Names: 60S ribosomal protein L3-like

Storage/Stability: Store at -20°C/1 year

Form of Antibody: Rabbit IgG in phosphate buffered saline (without Mg²⁺ and Ca²⁺), pH 7.4, 150mM NaCl, 0.02% sodium azide and 50% glycerol.

Immunogen: The antiserum was produced against synthesized peptide derived from internal of human RPL3L.

Purification: The antibody was affinity-purified from

rabbit antiserum by affinity-chromatography using epitope-specific immunogen.

Specificity: RPL3L antibody detects endogenous levels of total RPL3L protein.

Reactivity: Human (Identities = 100%, Positives = 100%)

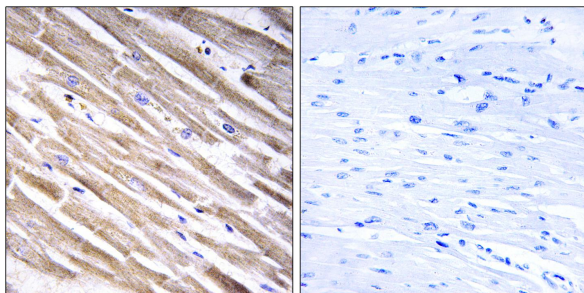
Applications: IHC: 1:50~1:100 IF: 1:100~1:500
ELISA: 1:40000

References:

van Raay T.J., Genomics 37:172-176(1996).

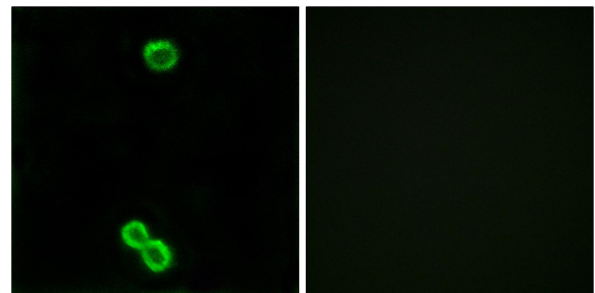
Daniels R.J., Hum. Mol. Genet. 10:339-352(2001).

The MGC Project Team; Genome Res. 14:2121-2127(2004).



Peptide - +

Immunohistochemistry analysis of paraffin-embedded human heart tissue using RPL3L antibody.



Peptide - +

Immunofluorescence analysis of MCF-7 cells, using RPL3L antibody.