



**Web:** [www.anbobio.com](http://www.anbobio.com)  
[www.dijibio.com](http://www.dijibio.com)  
**Order:** [order@dijibio.com](mailto:order@dijibio.com)  
**Tel:** (86) 519 8805 0026

## MRPL35 Antibody [#C14073]

**Catalog Number:** C14073

**Concentration:** 1mg/ml

**Swiss-Prot No.:** Q9NZE8

**Other Names:** 39S ribosomal protein L35, mitochondrial, L35mt, MRP-L35

**Storage/Stability:** Store at -20°C/1 year

**Form of Antibody:** Rabbit IgG in phosphate buffered saline (without Mg<sup>2+</sup> and Ca<sup>2+</sup>), pH 7.4, 150mM NaCl, 0.02% sodium azide and 50% glycerol.

**Immunogen:** The antiserum was produced against synthesized peptide derived from internal of human MRPL35.

**Purification:** The antibody was affinity-purified from

rabbit antiserum by affinity-chromatography using epitope-specific immunogen.

**Specificity:** MRPL35 antibody detects endogenous levels of total MRPL35 protein.

**Reactivity:** Human, Mouse

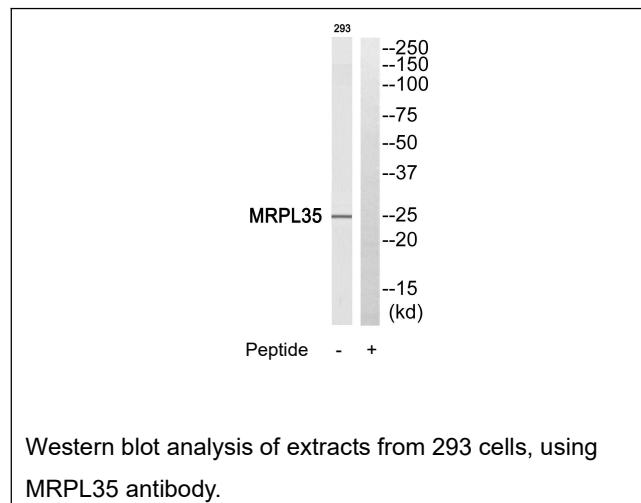
**Applications:** WB: 1:500~1:1000 ELISA: 1:5000

**References:**

Zhang Q.-H., Genome Res. 10:1546-1560(2000) [PubMed: 11042152].

Ota T., Nat. Genet. 36:40-45(2004) [PubMed: 14702039].

Bechtel S., BMC Genomics 8:399-399(2007) [PubMed: 17974005].



**For Research Use Only**