



Web: www.anbobio.com
www.dijibio.com
Order: order@dijibio.com
Tel: (86) 519 8805 0026

MRPL51 Antibody [#C14085]

Catalog Number: C14085

Concentration: 1mg/ml

Swiss-Prot No.: Q4U2R6

Other Names: 39S ribosomal protein L51, mitochondrial; bMRP-64; bMRP64; CDA09; HSPC241; L51mt; mitochondrial ribosomal protein L51; MRP-L51; MRP64; RM51

Storage/Stability: Store at -20°C/1 year

Form of Antibody: Rabbit IgG in phosphate buffered saline (without Mg²⁺ and Ca²⁺), pH 7.4, 150mM NaCl, 0.02% sodium azide and 50% glycerol.

Immunogen: The antiserum was produced against synthesized peptide derived from internal of human MRPL51.

Purification: The antibody was affinity-purified from rabbit antiserum by affinity-chromatography using epitope-specific immunogen.

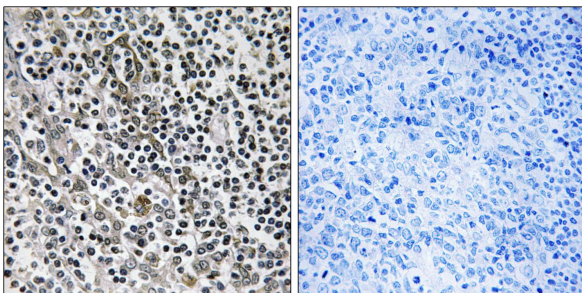
Specificity: MRPL51 antibody detects endogenous levels of total MRPL51 protein.

Reactivity: Human (Identities = 100%, Positives = 100%);
Mouse (Identities = 81%, Positives = 100%)

Applications: WB: 1:500~1:3000 IHC: 1:50~1:100
ELISA: 1:20000

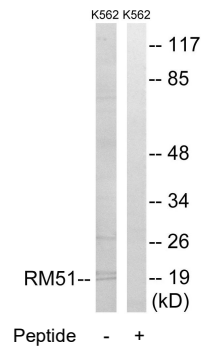
References:

Suzuki T., J. Biol. Chem. 276:33181-33195(2001).
Zhang Q.-H., Genome Res. 10:1546-1560(2000).
Kenmochi N., Genomics 77:65-70(2001).



Peptide - +

Immunohistochemistry analysis of paraffin-embedded human tonsil tissue using MRPL51 antibody.



Peptide - +

Western blot analysis of extracts from K562 cells, using MRPL51 antibody.