



Web: www.anbobio.com
www.dijibio.com
Order: order@dijibio.com
Tel: (86) 519 8805 0026

RPS12 Antibody [#C14095]

Catalog Number: C14095

Concentration: 1mg/ml

Swiss-Prot No.: P25398

Other Names: 40S ribosomal protein S12; RS12

Storage/Stability: Store at -20°C/1 year

Form of Antibody: Rabbit IgG in phosphate buffered saline (without Mg²⁺ and Ca²⁺), pH 7.4, 150mM NaCl, 0.02% sodium azide and 50% glycerol.

Immunogen: The antiserum was produced against synthesized peptide derived from C-terminal of human RPS12.

Purification: The antibody was affinity-purified from

rabbit antiserum by affinity-chromatography using epitope-specific immunogen.

Specificity: RPS12 antibody detects endogenous levels of total RPS12 protein.

Reactivity: Human, Mouse, Rat

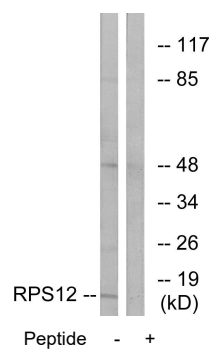
Applications: WB: 1:500~1:3000 IF: 1:100~1:500
ELISA: 1:40000

References:

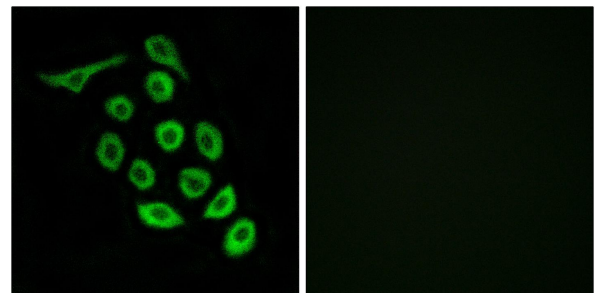
Herault Y., Nucleic Acids Res. 19:4001-4001(1991).

Bienvener W.V., Submitted (FEB-2008) to UniProtKB.

Vladimirov S.N., Eur. J. Biochem. 239:144-149(1996).



Western blot analysis of extracts from COLO cells, using RPS12 antibody.



Immunofluorescence analysis of A549 cells, using RPS12 antibody.