



Web: [www.anbobio.com](http://www.anbobio.com)  
[www.dijibio.com](http://www.dijibio.com)  
Order: [order@dijibio.com](mailto:order@dijibio.com)  
Tel: (86) 519 8805 0026

## RPS13 Antibody [#C14096]

**Catalog Number:** C14096

**Concentration:** 1mg/ml

**Swiss-Prot No.:** P62277

**Other Names:** 40S ribosomal protein S13

**Storage/Stability:** Store at -20°C/1 year

**Form of Antibody:** Rabbit IgG in phosphate buffered saline (without Mg<sup>2+</sup> and Ca<sup>2+</sup>), pH 7.4, 150mM NaCl, 0.02% sodium azide and 50% glycerol.

**Immunogen:** The antiserum was produced against synthesized peptide derived from internal of human RPS13.

**Purification:** The antibody was affinity-purified from rabbit antiserum by affinity-chromatography using

epitope-specific immunogen.

**Specificity:** RPS13 antibody detects endogenous levels of total RPS13 protein.

**Reactivity:** Human (Identities = 100%, Positives = 100%);  
Mouse (Identities = 100%, Positives = 100%);  
Rat (Identities = 100%, Positives = 100%)

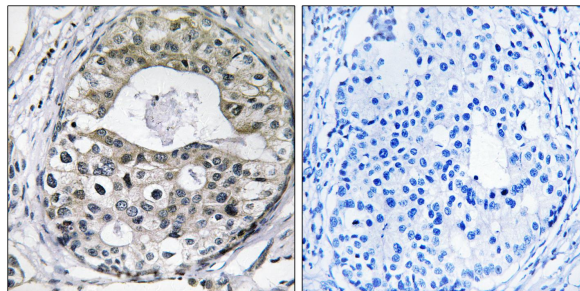
**Applications:** IHC: 1:50~1:100 ELISA: 1:40000

**References:**

Rush J., Nat. Biotechnol. 23:94-101(2005).

Olsen J.V., Cell 127:635-648(2006).

Kenmochi N., Biochem. Biophys. Res. Commun. 228:371-374(1996).



Peptide

-

+

Immunohistochemistry analysis of paraffin-embedded human breast carcinoma tissue using RPS13 antibody.